



Shri Siddheshwar Devasthan, Solapur

# Shree Siddheshwar Women's College of Engineering, Solapur

Approved by :  
**AICTE New Delhi**

Recognised by :  
**Government of Maharashtra**

Affiliated to :  
**DBATU, Lonere, Dist. Raigad**



E-mail : [office@sswcoe.edu.in](mailto:office@sswcoe.edu.in) | Website : [www.sswcoe.edu.in](http://www.sswcoe.edu.in)

T.P.S. II, Final Plot No. 74, Bhawani Peth, Rupa Bhawani Mandir Road, Solapur - 413 002 | Tel.: 0217 - 2627227



**Shri. Dharmraj Kadadi**  
President  
Shri Siddheshwar Devasthan



## Shri Siddheshwar Devasthan, Solapur

Shri Shivayogi Siddheshwar is considered as an incarnation of Lord Shiva, whose temple is located amidst a lake. The temple is highly revered by the devotees as it is the place, where Shri Siddheshwar attained Sanjeevan Samadhi. Every year, during Makar-Sankranti a big fair is organized famously known as 'Gadda Yatra'. The temple is administered by Shri Siddheshwar Devasthan Panch Committee. This is a public charitable trust established in 1885. Many social, educational and medical services are provided by the trust through various organizations. Shree Siddheshwar Women's College of Engineering is the first women's degree Engineering College in Solapur district located in the heart of the city. The aim of the college is to provide quality education without commercialisation for women empowerment.

## SSWCOE : SALIENT FEATURES

- Located in the heart of City • First Women's Degree Engineering College in Solapur District • Highly qualified and experienced staff
- In campus Girls Hostel • ETLP: A Specially Designed Engineering Teaching Learning Pedagogy which ensures Learning for achieving above 70% Marks for each student. • Personal counseling by Psychologist Dr. Padmaja Gandhi. • Fully planned soft skills, aptitude & technical training programs for better placement opportunities. • MoUs with Leading Industries for Campus Placement and Internships. • MOOCs like NPTEL with Local Chapter, Coursera, Infosys Springboard, ATAL etc. • Personal attention to individual students through Mentor Sessions • All Govt. Scholarships available • Bus Facility.

## ADMISSION REQUIREMENTS

### First Year B. Tech

#### Eligibility:

- H.S.C. Science: Physics, Mathematics & Chemistry / Biology / Biotechnology / Technical Vocational Subjects

Open Category: 45% • Reserved Category : 40% &

- MHT-CET Non Zero Score in PCM

OR

- JEE (Main) Paper-I Non Zero Positive Score

#### Documents Required :

**(A) All Category :** • SSC Mark-sheet • HSC Mark-sheet

- MHT-CET Score Card/JEE (Main) paper-1 Scorecard
- Leaving Certificate • Nationality - Domicile Certificate
- Nationalized Bank Passbook linked with Aadhar Card
- Income Certificate

**(B) SC/ST Category :** In addition to documents mentioned in (A) + Caste Certificate + Caste Validity Certificate

**© VJ/DT/NT/OBC/SBC :** In addition to documents mentioned in (A) & (B) + Non-creamy Layer Certificate

**(D) EWS (Economically Weaker Section) :** In addition to documents in (A) + EWS Certificate.

### Direct Second Year B.Tech

#### Eligibility:

- Diploma Engineering in appropriate branch
- Open Category: 45% • Reserved Category : 40% OR
- B.Sc. Degree
- Open Category: 45% • Reserved Category : 40% OR

- D.Voc. in same or allied sector

#### Documents Required :

**(A) All Category :** • SSC Mark-sheet • Diploma Final Year Mark sheet/B.Sc./D.Voc. Mark-sheet • Leaving Certificate Nationality-Domicile Certificate • Nationalized Bank Passbook linked with Aadhar Card • Income Certificate

**(B) SC/ST Category :** In addition to documents mentioned in (A) + Caste Certificate + Caste Validity Certificate

**(C) VJ/DT/NT/OBC/SBC :** In addition to documents mentioned (A) & (B) + Non-creamy Layer Certificate

**(D) EWS (Economically Weaker Section) :** In addition to documents in (A) + EWS Certificate.

Govt. Scholarship : SC / ST / VJ / DT / NT / OBC / SBC / EBC / EWS / Minority Scholarships  
 Special Scholarship Cell : To support financially needy students through various private organizations/Industry CSR funds etc.  
 Financial Assistance : An Educational Loan facility by banks with minimum interest through Vidyalaxmi Loan Portal (VLP)  
<https://www.vidyalaxmi.co.in/students>

## WELL EQUIPPED LABORATORIES

Engineering Chemistry Lab



Power Electronics Lab



Central Workshop



Programming Lab

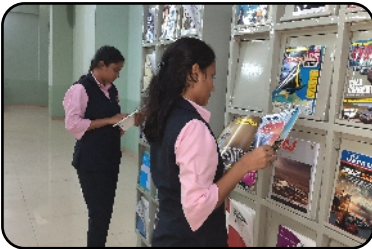


## ACHIEVEMENTS



### MoU :

MoU with (KIT) Kolhapur Institute of Technology, Kolhapur for Student's Internship & Placements



### LIBRARY:

- National & International journals.
- Digital Library & Internet Facility.
- Fully computerized system
- Book Bank facility
- Reading room e-Journals.
- Daily News papers & Magazines.
- General Knowledge books.
- Personality Development books.



### IN CAMPUS GIRLS HOSTEL :

- Attached bathrooms for every room.
- Hot water facility.
- Mess Facility



- Mission Amrit Sarovar - Jal Dharohar Sanrakshan Internship programme by the Ministry of Housing and Urban Affairs, Govt. of India in co-ordination with AICTE, New Delhi, Received Rs. 2 lakhs as a stipend



- Ms Shruti Shete - SY B.Tech (CSE) Won 1st Prize in University Swimming competition at Kolhapur & 3rd Prize in Yoga competition at Dhule

Placements began with Women's Special Drives



## VARIOUS COMMITTEES AND FACILITIES

- 1 All facilities as per guidelines of A.I.C.T.E. New Delhi are available in the College.
- 2 Smoking and use of tobacco products are strictly prohibited in College Campus.
- 3 All the arrangements as per the norms of fire safety law are made in the College Campus.

- 4 The ramps are made for PWD (Persons with Disability) wherever necessary.
- 5 Internal complaint committee (I.C.C.) is in action as per the requirements of M.H.R.D. Govt. of India and A.I.C.T.E. and the sexual harassment of women at workplace (Prevention, Prohibition and Redressal) Act 2013 are uploaded on College website.
- 6 Ragging is strictly prohibited inside and outside the college campus and the norms of the same are uploaded on college website.

- 7 Grievance Redressal committee is active and the information of the same is uploaded on College website.
- 8 Collection of capitation fee is prohibited as per Anti-capitation Act.
- 9 The Feedback facility of Students and Faculty members is available in the AICTE web portal.

College Website :  
[www.sswcoe.edu.in](http://www.sswcoe.edu.in)

## Our Students getting placed In Multi-National Companies

TCS  <b>Bhavana Guda</b> CSE 7.6 LPA	TCS & CAPGEMINI  <b>Vihara Kasabe</b> CSE 3.4 & 5.75 LPA	TCS  <b>Aarti Yedur</b> CSE 3.4 LPA	TCS  <b>Laxmi Kolhapure</b> CSE 3.4 LPA	TCS & CGI  <b>Diya Kasabe</b> CSE 3.4 & 3.92 LPA	TCS & CGI  <b>Apurva Gaikwad</b> CSE 3.4 & 3.92 LPA	CAPGEMINI  <b>Janhavi Annaldas</b> CSE 5.75 LPA	CAPGEMINI  <b>Anuksha Shinde</b> CSE 4.25 LPA	CAPGEMINI  <b>Bhavana Mergu</b> E&TC 4.25 LPA
CAPGEMINI  <b>Janhavi Bugadi</b> CSE 4.25 LPA	CAPGEMINI  <b>Manjula Mitti</b> E&TC 4.25 LPA	CAPGEMINI  <b>Ramya Vadnal</b> CSE 4.25 LPA	CAPGEMINI  <b>Shrutika Chippa</b> CSE 4.25 LPA	CAPGEMINI  <b>Srushti Kharade</b> CSE 4.25 LPA	CAPGEMINI  <b>Shrutika Sakat</b> CSE 4.25 LPA	CAPGEMINI  <b>Vaishnavi Katkar</b> CSE 4.25 LPA	CGI  <b>Aarti Patil</b> CSE 3.92 LPA	CGI  <b>Aboli Mahindrakar</b> CSE 3.92 LPA
CGI  <b>Aishwarya Nilange</b> CSE 3.92 LPA	CGI  <b>Aishwarya Sutar</b> CSE 3.92 LPA	CGI  <b>Akshata Kattamayya</b> CSE 3.92 LPA	CGI  <b>Priya Ankaram</b> CSE 3.92 LPA	CGI  <b>Sanjana Mamdyal</b> CSE 3.92 LPA	CGI  <b>Shambhavi Sidgiddi</b> CSE 3.92 LPA	CGI  <b>Shradha Kapse</b> E&TC 3.92 LPA	CGI  <b>Shrutika Irrannar</b> CSE 3.92 LPA	CGI  <b>Sukanya Bhosale</b> CSE 3.92 LPA
CGI  <b>Uma Gajul</b> CSE 3.92 LPA	CGI  <b>Swapnali Mote</b> E&TC 3.92 LPA	CGI  <b>Rutuja Dhaigode</b> E&TC 3.92 LPA	CGI  <b>Kirti Khatake</b> E&TC 3.92 LPA	CGI  <b>Laxmi Yekurge</b> E&TC 3.92 LPA	CGI  <b>Shravana Gangade</b> Electrical 3.92 LPA	CGI  <b>Mrunal Kapse</b> Electrical 3.92 LPA	SANKEY  <b>Ayesha Choudhari</b> CSE 4.00 LPA	

**Institute  
Code  
6938**

Sr.	Branches	Intake	Course Code
1	Computer Science & Engg.	120	693824250F
2	Computer Science & Engg. (Artificial Intelligence & Data Science)	60	693892550F
3	Electronics & Telecommunication Engg.	60	693837250F
4	Electrical Engg.	60	693829350F

### ADMISSION CONTACT FOR FIRST YEAR B.TECH.

● Dr. A. S. Patil - 9922641001 ● Prof. S. K. Bhargande - 7767844111

### ADMISSION CONTACT FOR DIRECT SECOND YEAR B. TECH

Prof. S. C. Mhamane - 9970262796

● Computer Science & Engineering	Prof. S. D. Bhosale	9422466494
● CSE (Artificial Intelligence & Data Science)	Prof. V. V. Shirashyad	9481488008
● Electronics & Telecom. Engineering	Prof. S. C. Mhamane	9970262796
● Electrical Engineering	Prof. S. B. Jamge	8830814557